

As the year draws to a close, 2D:3D remains at the forefront of design innovation and execution. Our commitment to excellence and our ability to bring visions to life have solidified our position in the global market. Here's a glimpse into the groundbreaking projects we've been privileged to be part of recently. Stay tuned for more updates from the dynamic world of 2D:3D.

Feel free to explore our website at www.2d3d.co.uk to discover all the projects we've successfully completed up until 2023.

Hanging Models for (SAASCC) Sheikh Abdullah Al Salem Cultural Centre in Kuwait.

2D:3D created six life-size hanging models that represent the history of transportation innovation. The models range from the Wright Brothers Airplane to the Terrafugia Flying Car and are currently installed at Kuwait's SAASCC Museum. The majority of the models are machined from high density PU foam, moulded and cast as a GRP shell with internal metal framework, and an Automotive spray paint finish.



WRIGHT BROTHER'S AIRPLANE

This is a meticulously crafted full size replica of the Wright Brothers' airplane, the 'Wright Flyer III', constructed from metal, timber, and cotton muslin. It provides a detailed representation of the structure and all its components.





MONTGOLFIER BALLOON

The Montgolfier balloon, an innovative creation by the French brothers Joseph-Michel and Jacques-Étienne Montgolfier, marked a pivotal moment in aviation history with its first untethered flight in 1783. In our workshop, we constructed a half size replica of this groundbreaking vessel, measuring 6 meters in diameter, fabricated in moulded fiberglass, with a faithful painting of the decorations of golden flourishes, signs of the zodiac and suns.



BLUEBIRD K7

A 1:1 replica of Bluebird K7, in which Britain's Donald Campbell set seven world water speed records between 1955 and 1967.



ELEKTRA ONE SOLAR PLANE

A full size replica of the Elektra One Solar Plane that became the first solar-electric aircraft to cross the Alps in both directions. Fabricated in moulded fiberglass with internal metal framework, and automotive spray paint finishes.





TERRAFUGIA TF-X FLYING CAR

Introduced in 2009, the Terrafugia TF-X concept has been recognized as the world's first practical flying car. This innovative design underwent a significant revision in 2015. The model you see here is a full size replica of this latest design, reflecting the cutting-edge advancements in flying car technology that were unveiled in 2015.

VESTAS SAILROCKET 2

The Vestas Sail Rocket 2, which was constructed at East Cowes, set new world records in sailing speed for both 500 meters and the nautical mile in November 2012. The model you see here is a meticulously crafted half size replica of this groundbreaking vessel.





BALDOZER

Tuesday's Child produced a game show called "Man vs Robot" that featured a giant rolling robot which was fabricated at 2D:3D with a metalwork frame and tough GRP skin. The robot had a sophisticated electronic system that allowed it to move in any direction and display various expressions with its LED eyes. The robot was remotely controlled by a user who could interact with the game show participants.

RECEPTION POD

A reception pod built for the premises at 3 Sugar House Lane. This structure is crafted from timber, plywood and plasterboard, featuring glass panels on both sides for a modern aesthetic. The pod includes a door on the side and a front desk, equipped with sliding windows positioned at a strategic angle to ensure that no fixtures are visible, enhancing the sleek appearance of the space.





RETAIL COPPER DISTILLERY - QATAR DUTY FREE

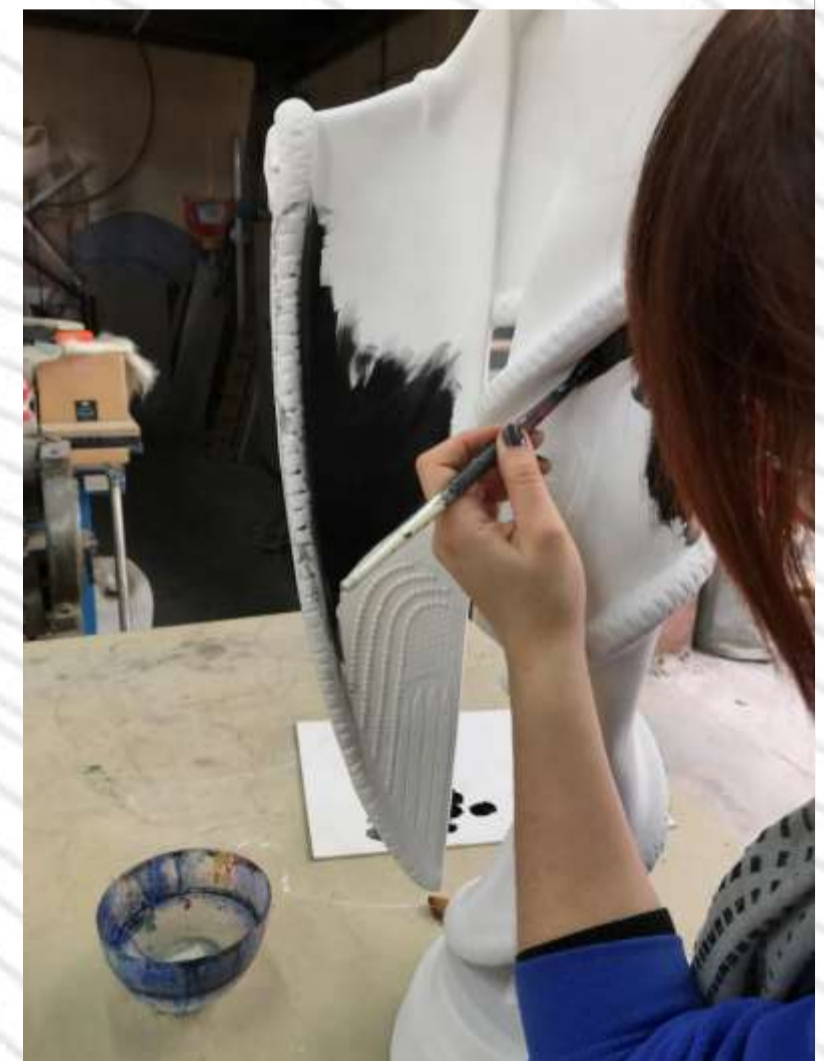
A Mock Distillery was constructed by our team, in accordance with the design specifications provided by Wanda Creative. Fabricated in Copper with internal metal and timber framework, with stainless steel accents. The structure is composed to serve as a point of sale and display. This installation is located at Duty Free in Hamad International Airport, Qatar, and serves as a showcase for various types of whiskey. We invite all travellers passing through the airport to take a moment to appreciate the installation's exquisite beauty and craftsmanship.

SCALED SCULPTURES OF 'ERTE' FIGURINES

Our team skillfully hand-sculpted seven ERTE figurines in clay, each magnified to five times their original size. These enlarged sculptures were then moulded, and the figurines cast in GRP. The cast sculptures underwent a meticulous painting process to achieve a perfect replica of the original aesthetic. The accompanying images provide a comparison between the original figurines used as references and the larger, enhanced figurines crafted by our team at 2D:3D.



'TANGARA'



'CHINCHILLA'



'CABARET'



'FIRE LEAVES'



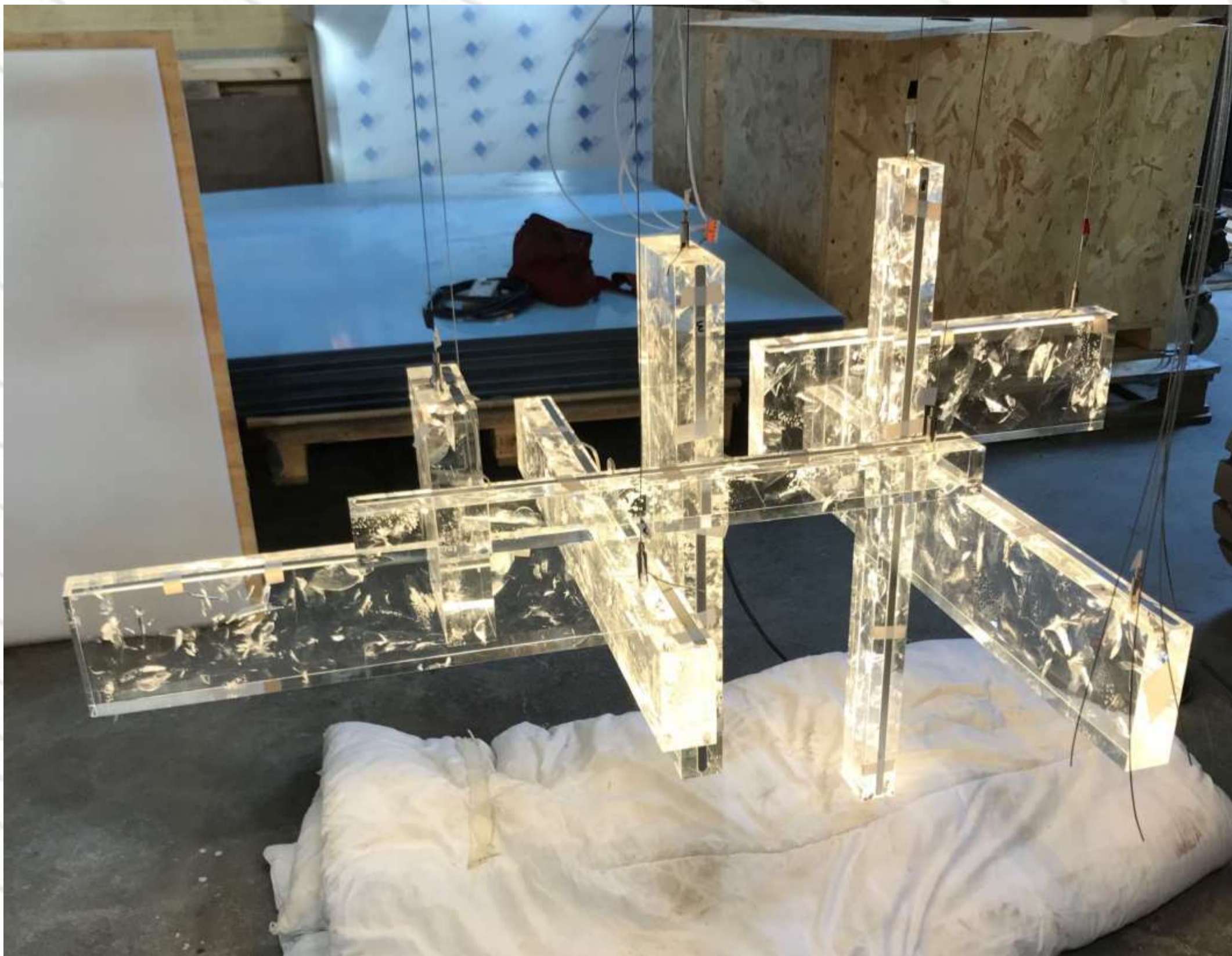
'DECO'



'FLOWER PETAL GOWN'



'GALA'



ACRYLIC AND MICA CHANDELIER

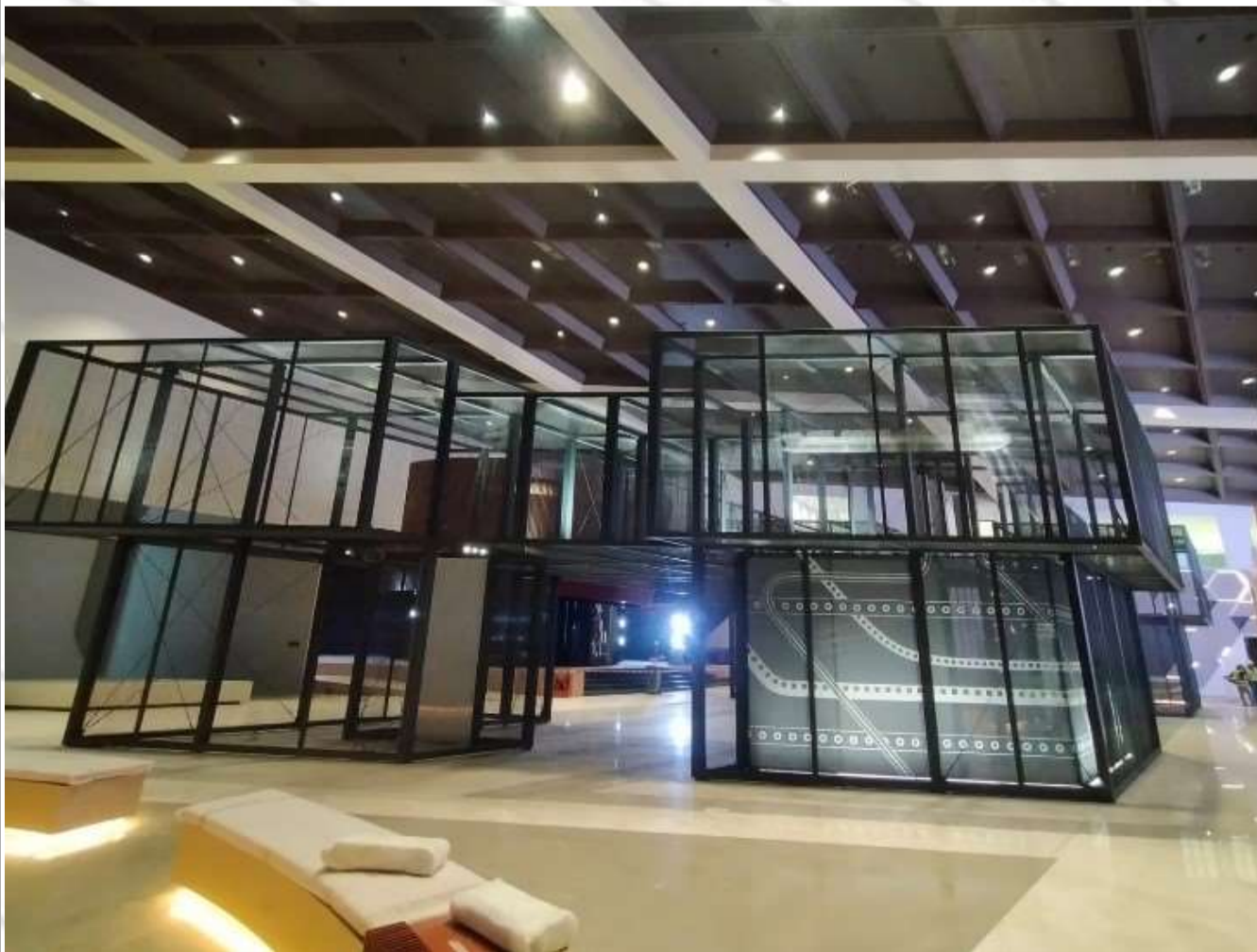
The Acrylic & Mica chandelier was custom-made for a private client at the behest of The Charles Burnand Gallery. The chandelier was crafted from cast acrylic blocks that were CNC-machined with grooves to accommodate LED strips, which were then seamlessly integrated into the acrylic. The LED strips illuminate the blocks, creating a stunning visual effect.





MESH PAVILION AND ITS ELEMENTS

The Renaissance Gallery of the Oman Across Ages Museum in Nizwa, Oman, houses the Mesh Pavilion, a 22-meter-long, 14-meter-wide, and 6-meter-tall structure that mimics the 'parallelogram' geometry of the building that houses it. The pavilion features a collection of mesh models, intricately crafted by our team, that provide a comprehensive overview of Oman's infrastructure and connectivity throughout history.



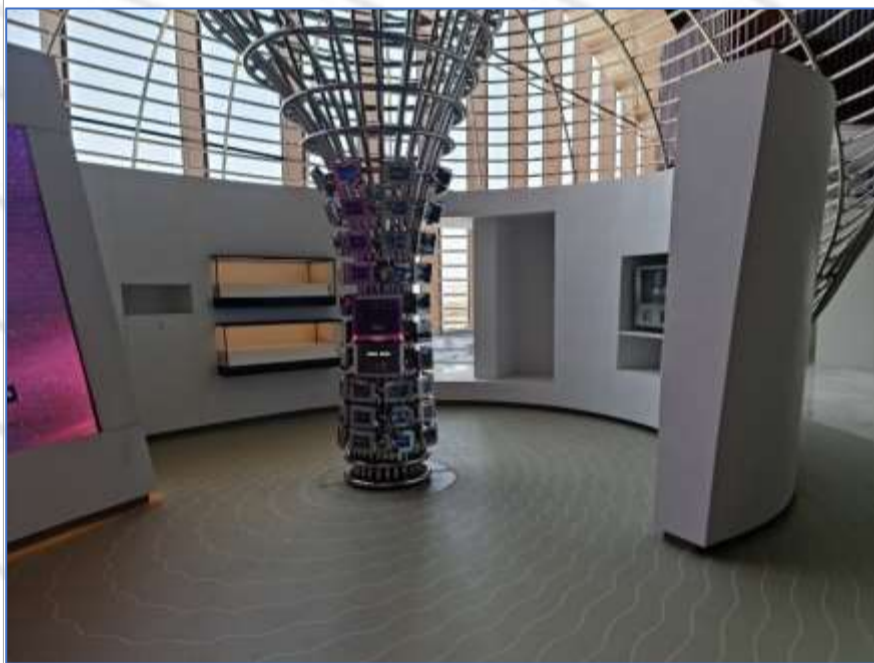


RING PAVILION AND ITS ELEMENTS

This impressive structure spans 18 meters in length, 10 meters in width, and stands 5.2 meters high, fabricated in welded mirror polished stainless steel tubes. Within its confines, it houses two curved walls that collectively provide a comprehensive overview of the history of Oman's Media & Communication.

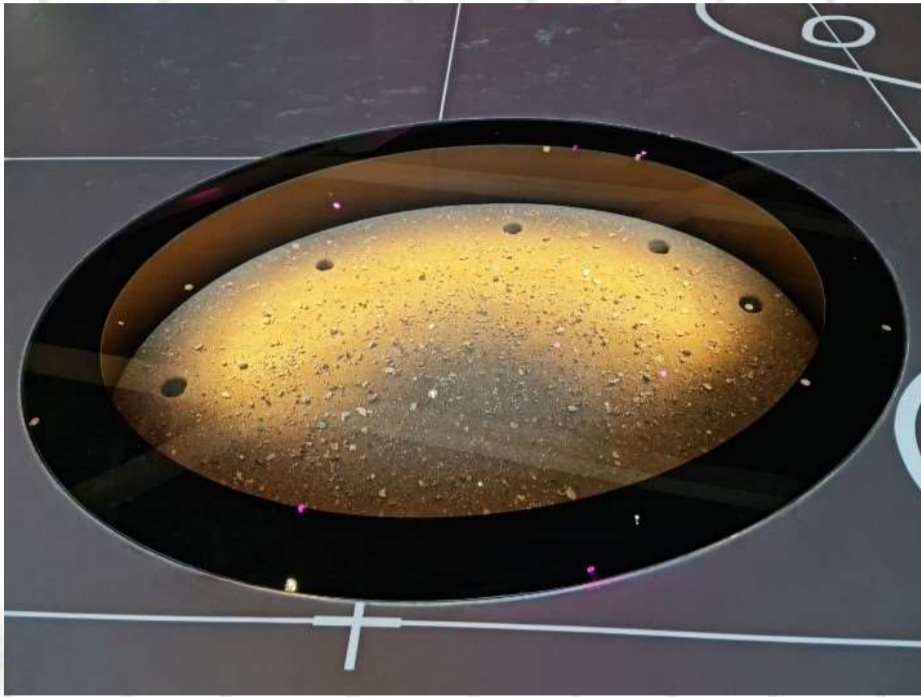


The **CURVED WALLS**, within the Ring Pavilion, are constructed using a combination of timber and metalwork, and are skillfully finished with a consistent Corian surface by our team. These elegantly curved walls serve as a sophisticated platform for the display of a diverse range of objects and interactive exhibits. Through these exhibits, a comprehensive overview of the evolution of radio and telecommunication in Oman throughout the years is provided. Furthermore, the walls are adorned with various props, made from Jesmonite, representing radios, televisions, and microphones, all made by 2D:3D, further enhancing the visual allure of the space.



RECONSTRUCTION OF POST HOLES, PARTIAL HUT & FULL HUT

This exhibit component comprises three reconstructed dwellings such as those built at Ra's al-Hamra in the Neolithic period. The intention is to build three separate huts, in differing states of structural completion.



POST HOLES

This reconstruction, housed within the floor of the gallery, shows the post hole locations of the huts in situ, showing visitors how archaeologists discovered the remaining evidence of these structures at Ra's al-Hamra



PARTIAL HUT

This reconstruction displays a hut in the process of being built, allowing visitors to comprehend the underlying structure and materials of a hut.



FULL HUT

This reconstruction showcases a complete hut similar to those that would have been built in Ra's-al-Hamra approximately 6000 years ago by the Fisherman Gatherers living in the Qurum area of Muscat.



MINECRAFT ANIMALS

For the launch of 'MINECRAFT EARTH', models of Minecraft animals were strategically installed in Central London. These models were expertly crafted from GRP, supported by a structure of metal and wood. To complete the look, printed graphics, along with LED lighting, were meticulously applied to the models and plinths.

CLAY OVEN DOME

We were honored to receive a unique request from the esteemed Claridges Hotel, which led us to craft a bespoke dome cover for their Clay Oven situated within their kitchen premises. This distinctive dome was meticulously fabricated utilizing Jesmonite, ensuring durability and longevity. To add a touch of elegance and vibrancy, the dome was then painted in a striking Ferrari Red color, enhancing its visual appeal.





RON ARAD'S MORGAN X HUNTSMAN SCULPTURE

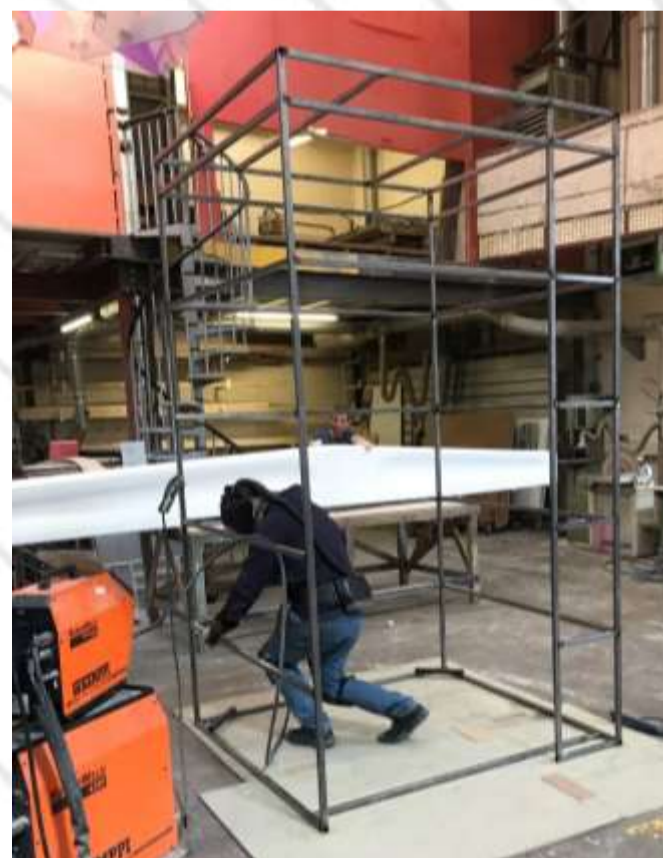
Imagine a masterpiece, where a Morgan Motors car stripped down to its bare essence, leaving only the outer skin intact. This car body is then artistically reassembled, using a network of bent and rolled pipes that mimic the form of the tyres and chassis. The creative mind behind this transformation is none other than Ron Arad, who adds his final touch with a unique paint job.

A testament to the power of creative reimagination.



GIORGIO ARMANI SI BOTTLE

For the launch of Giorgio Armani's new refillable perfume bottle at Covent Garden in London, we constructed and installed an interactive perfume bottle, magnified to 45 times its actual size. This towering structure, standing 5 meters high on a plinth, featured a door for visitors to step inside. Once inside, the visitors found themselves standing on an LED screen, surrounded by mirrored walls and ceiling. The screen projected video content, cultivating an immersive experience that transported visitors into an infinite expanse, wholly immersed in the aromatic universe of the perfume's ingredients.





NO 5 CHANEL BOTTLES

As part of the launch of No 5 CHANEL Bottle, several bottles were fabricated and positioned at multiple sites throughout London for Sculptivate. The bottle is situated atop an independent pedestal, featuring integrated lighting elements that accentuate the exquisite paintwork achieved by 2D:3D's amazing team of crafts people.





YAYOI KUSAMA – DOTS

Emerging from the creative genius of artist Yayoi Kusama is an extraordinary art installation titled “The Dots”. This installation, prominently displayed on the walls of Harrods in London, features large, multi-coloured dots. The concept behind “The Dots” is to represent the vibrant splashes of a giant paintbrush on a canvas. However, in this innovative interpretation, the canvas is transformed into the architectural facade of the building itself.



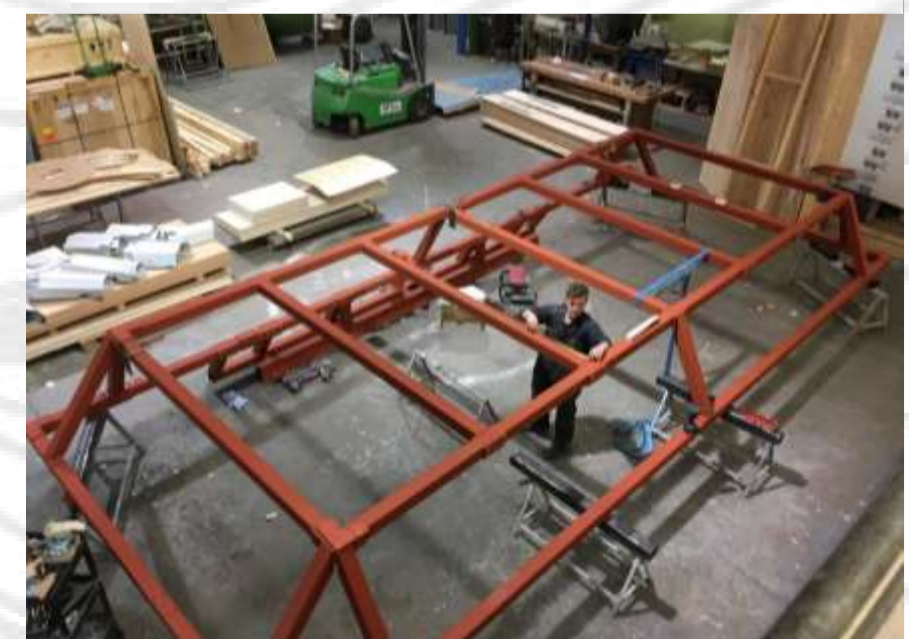


ZENDAYA'S CINDERELLA DRESS 2019 MET GALA

Tommy Hilfiger's dress for Zendaya at the Met Gala was an exceptional piece of work. The dress was designed to transform in size and from grey to blue with a swish of a wand. The transformation was developed by the 2D:3D team of engineers, along with the client pattern cutters and seamstresses. The LEDs embedded in the dress are pre-programmed and remotely controlled.

You can see from the images ; a switch (wand) initiates the transformation, where the dress grows in size, and the LEDs start illuminating the dress from the bottom to the top.





V & A MUSEUM TENT

The V & A Museum commissioned a bespoke exhibition space, called The Dark Tent, fabricated entirely by 2D 3D. The tent consists of a steel skeleton with wooden frames that support the internal and external cladding of curved plywood. The internal space is stained red to match the architect David Kohn's vision, with technical projection surfaces for the showing of videos and slide shows. The external surfaces are clad in Colorcoat Prisma sheets. The arch also features a sliding door that folds seamlessly into the design.



NEFERTITI BUST

We were commissioned to create a life-sized painted replica of the Nefertiti bust for a private museum. Working from picture references, the bust was meticulously sculpted in clay with the utmost precision to match every detail and nuance of the 3400 year old sculpture. This included faithfully replicating the peeling and broken stucco coating and the damaged and missing parts. The sculpture was silicone moulded and cast in jesmonite. Finally, it was faithfully painted to match the original bust that is currently installed in the Berlin Neue Museum.





SAMSUNG – FOLD & FLIP PHONES

Helix 3D commissioned 2D:3D to create a larger than life-sized replica of the Samsung Flip & Fold smartphones for their launch. We utilized the pre-launch prototypes of the phones to perfect a 3D model and fabricate all the exquisite details that make up the phones.. Once we had all the parts ready, we assembled every part of the phone to its last detail and engraved letters in areas wherever necessary. Finally, the two phones were made to stand erect on custom-built metal stands with backlit graphics to mimic the LED screens.



TWIST MUSEUM - KALEIDOSCOPES

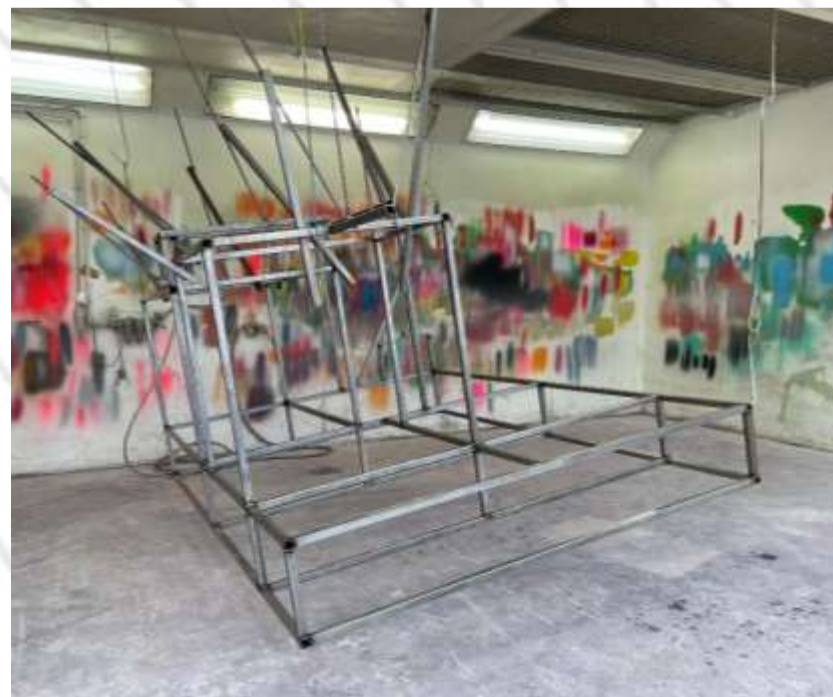
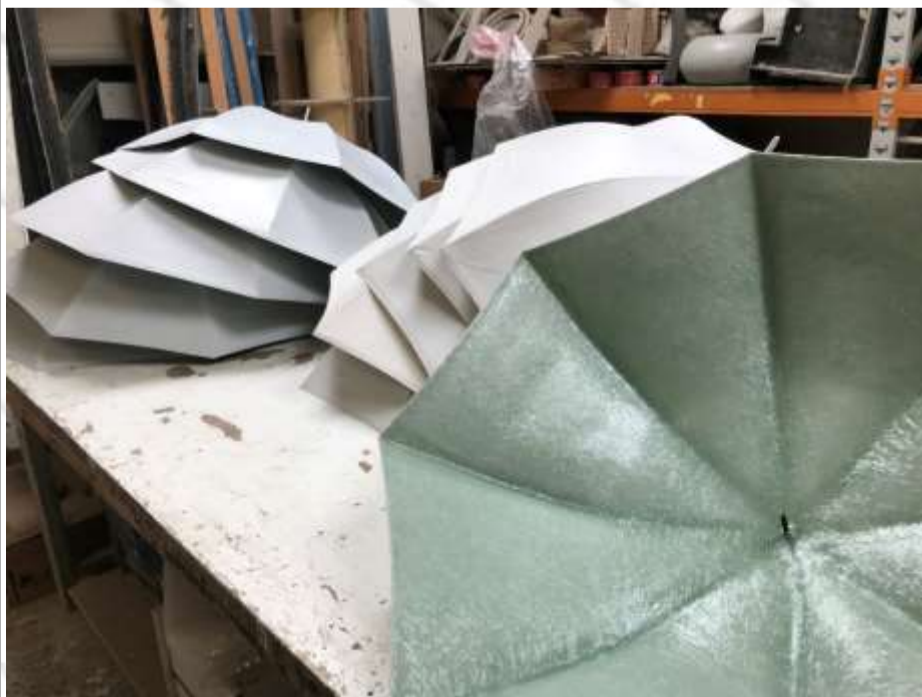
We built a collection of three kaleidoscopes, each with a unique shape: triangle, pentagon, and octagon. The kaleidoscopes were made of timber and glass mirrors and were equipped with app-controlled and audible sensor LED lights that produced various lighting patterns in response to the acoustics in the room. This resulted in a captivating display of light movement and infinity effects within the kaleidoscope.

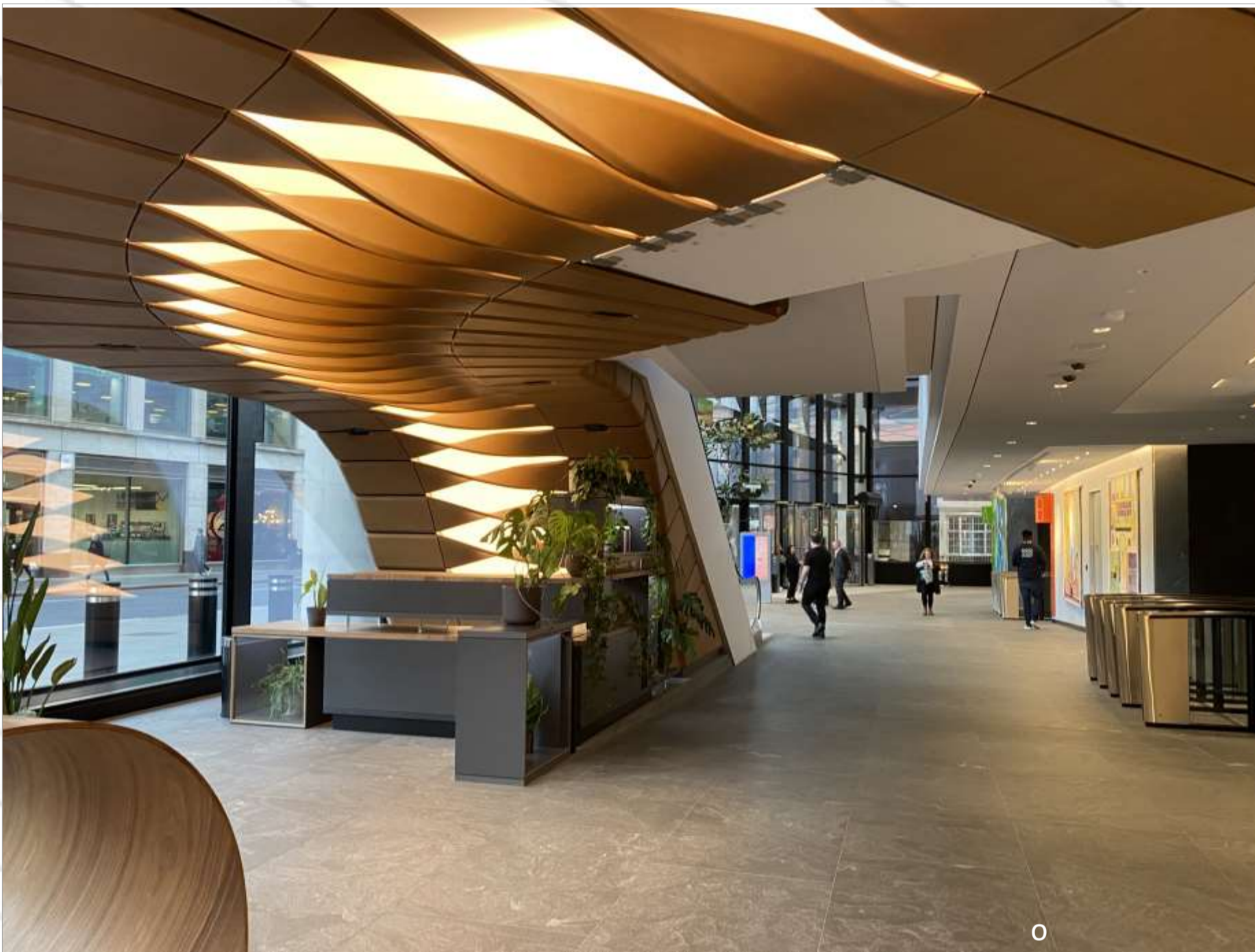




TWIST MUSEUM - UMBRELLAS

The Colour Corridor of the Twist Museum features a unique installation of multi-coloured umbrellas. These umbrellas are fabricated from GRP and supported by carbon-fibre rods and stainless steel pipes. A custom framework was designed and built to accommodate these umbrellas in their predetermined locations by the artist. The multi-coloured umbrellas are situated in a monochromatic room, and a spotlight illuminates them to reveal their true colours. You can observe this effect in the images above.





22 BISHOPS GATE CEILING TWISTS

The lobby of the 22 Bishopsgate skyscraper in London features an installation developed by PLP Architects. Working together with leather experts Bill Amberg Studios, 2D:3D fabricated this stunning array of ceiling panels that sprawl across the under side of the mezzanine and the under side of the escalators. The installation consists of a series of ribbon-like twists made of wood and GRP and wrapped with premium leather. The twists are arranged in a wave-like pattern across the ceiling, creating an undulating effect that is both mesmerizing and awe-inspiring.

Behind the twists are a series of warm lights that enhance the leather finish, creating a warm and inviting atmosphere in the lobby.



These are a few selected projects that demonstrate the capabilities and offerings of 2D:3D.

If you require further information for any of the above projects, or you have a specific project to discuss, please contact Rob

Email: rob@2d3d.co.uk

Tel: 020 8998 3199

For more content and to stay updated, please visit our website & our social media handles.

Website: www.2d3d.co.uk

 **Facebook:** [2D3D](https://www.facebook.com/2D3D)

 **Instagram:** [2d.3d](https://www.instagram.com/2d.3d)

 **Twitter:** [@2D3Dltd](https://twitter.com/2D3Dltd)

2 D : 3 D